



WELCOME!!!  
LRSD GT ZOOM NIGHT

# \* WELCOME!!

## Agenda/Topics

- + Characteristics of Advanced and Gifted students
- + Overview of Advanced Academics Support Services
- + Referral and Placement Process
- + Resources
- + Gather Input/Answer Questions



# HELLO! MEET OUR STAFF



Have Questions?????

Please share them in the chat during  
the presentation and we will work to  
answer them!



1

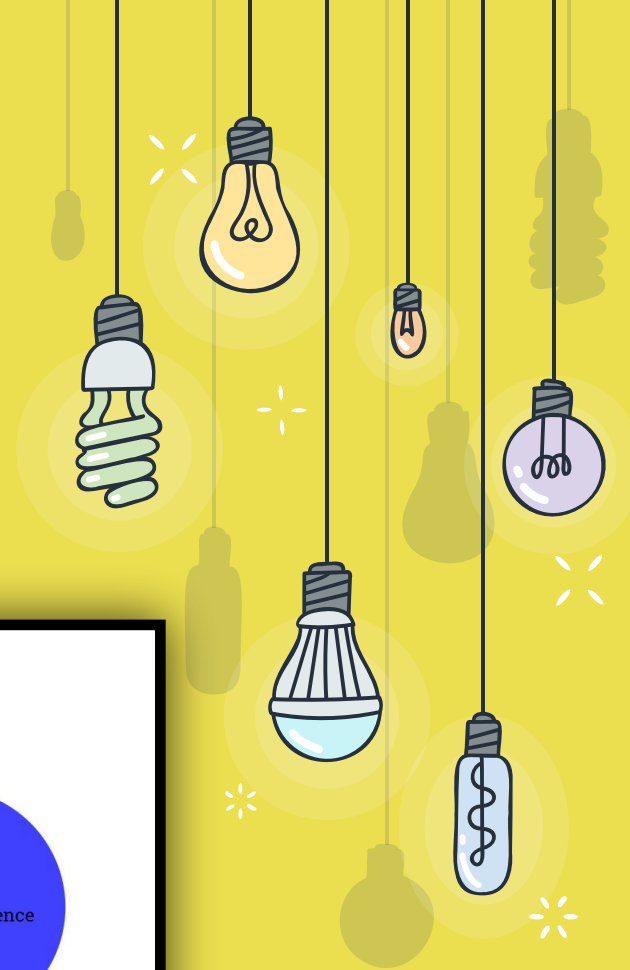
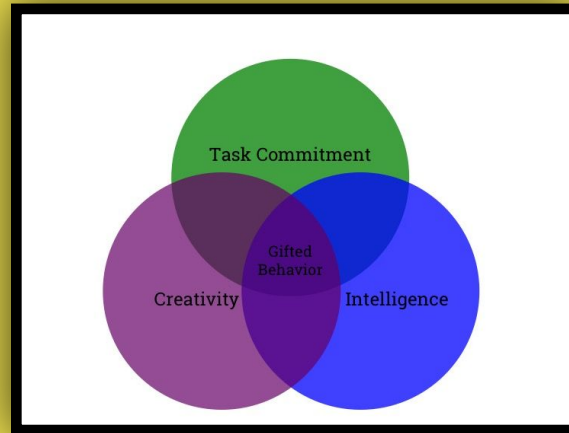
WHAT DOES "GIFTED" MEAN?



“

**Definition-Gifted and Talented children are those of high potential or ability, whose learning characteristics and educational needs require qualitatively differentiated educational experiences and/or services. Possession of these talents and gifts, or the potential for their development, will be evidenced through an interaction of above average intellectual ability, task commitment, and/or motivation and creative ability.**

**-Arkansas Dept. of Education**





| LEARNING EXAMPLES  | CREATIVITY EXAMPLES                        |
|--|--|
| -Advanced vocabulary   | -Constantly asks questions                 |
| -Quick mastery and recollection of facts   | -Is comfortable taking risks               |
| -Enjoys reading  | -Loves adventure.                          |
| -Wants to know what makes things tick  | -Has a keen sense of humor                 |
| -Catches or understands more than others when reading or viewing a film, movie. etc. | -Gives unique and clever responses         |
| -Desires to have complete knowledge/understanding of how things work.                | -Likes to adapt, improve, or modify things |
| -Communicates clearly and articulately   | -May be emotionally sensitive              |





## MOTIVATIONAL EXAMPLES

-Easily bored with routine tasks

-Carries responsibility well

-Becomes absorbed in topics of interest

-Is self confident

-Strives for perfection

-Adapts well to new situations

-Works independently

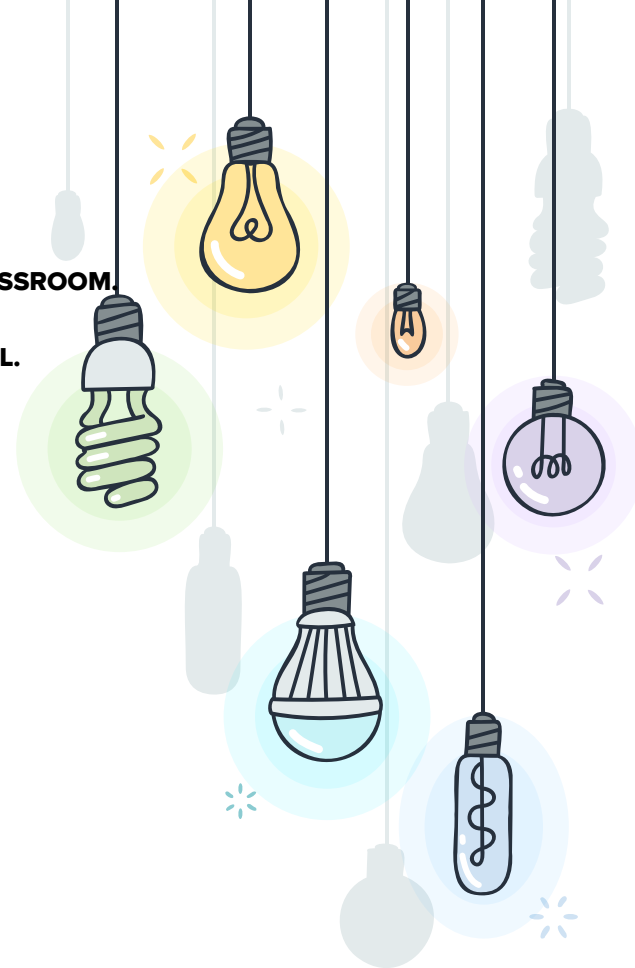
-Is sociable

-Stubborn! Are sure of what they like, want, and need

-Directs classroom when placed in a group activity

# MYTHS

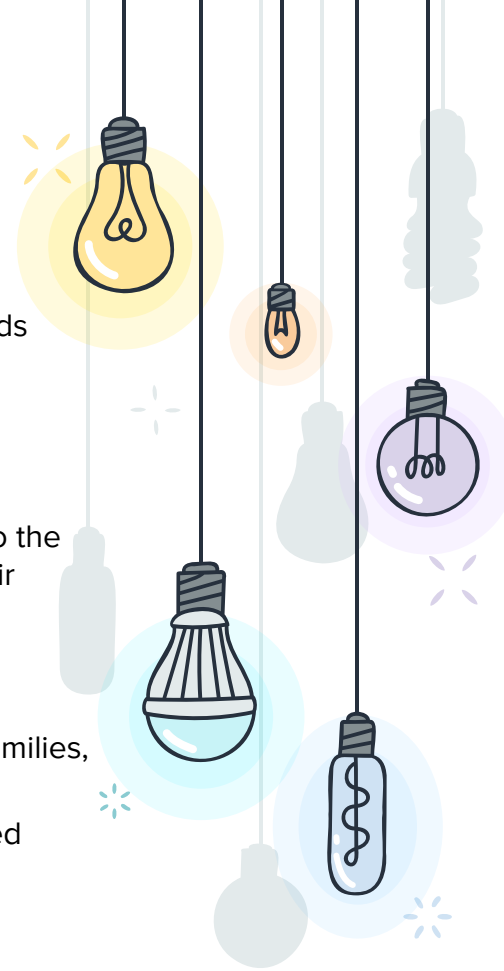
- 1. GIFTED STUDENTS DON'T NEED HELP; THEY'LL DO FINE ON THEIR OWN.**
- 2. TEACHERS CHALLENGE ALL THE STUDENTS, SO GIFTED KIDS WILL BE FINE IN THE REGULAR CLASSROOM.**
- 3. GIFTED STUDENTS MAKE EVERYONE ELSE IN THE CLASS SMARTER BY PROVIDING A ROLE MODEL.**
- 4. ALL CHILDREN ARE GIFTED.**
- 5. ACCELERATION PLACEMENT OPTIONS ARE SOCIALLY HARMFUL FOR GIFTED STUDENTS.**
- 6. GIFTED EDUCATION PROGRAMS ARE ELITIST.**
- 7. THAT STUDENT CAN'T BE GIFTED- HE'S GETTING BAD GRADES.**
- 8. GIFTED STUDENTS ARE HAPPY, POPULAR, AND WELL ADJUSTED IN SCHOOL.**
- 9. THAT CHILD CAN'T BE GIFTED, SHE HAS A DISABILITY.**
- 10. OUR DISTRICT HAS A GIFTED AND TALENTED PROGRAM: ADVANCED PLACEMENT COURSES**
- 11. GIFTED EDUCATION REQUIRES AN ABUNDANCE OF RESOURCES.**





# PROGRAM GOALS

- Develop a systematic and continuous method of identifying new students whose needs indicate a need for service and support, and who will benefit from participation in the program.
- Develop, implement, manage, and support a variety of program options that meet the needs of advanced learners
- Provide educational opportunities and differentiated experiences particularly suited to the needs of gifted learners through which they can continue developing and exceed their potential
- Establish learning environments that value and enhance intelligence, talent, creativity, higher levels of thinking, problem solving, and affective growth
- Provide opportunities for active participation and engagement of students, parents, families, staff, and community members
- Create processes and procedures that support the schools' efforts to meet and exceed standards.
- Recognize and celebrate diversity; strive to identify top 10% in each ethnic group
- Celebrate strengths and successes while addressing deficits
- Practice the art of reflection in all aspects of the program for the purpose of improvement



# CURRICULUM

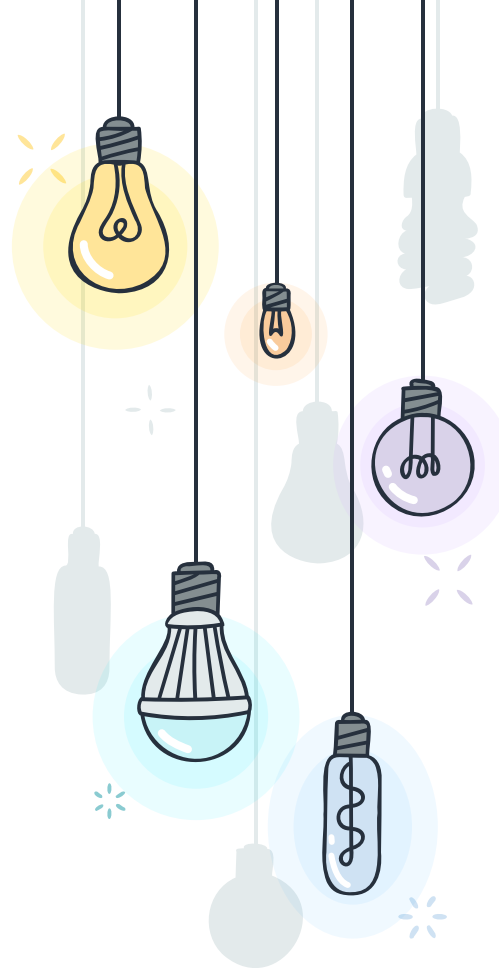
**Grades K-2 (and 3-5 at many schools): Whole Group Enrichment/Small Group Sessions**

**Grades 3-5: Pull-out Classes taught by G/T certified staff. Students receive 150 minutes of support/ service per week.**

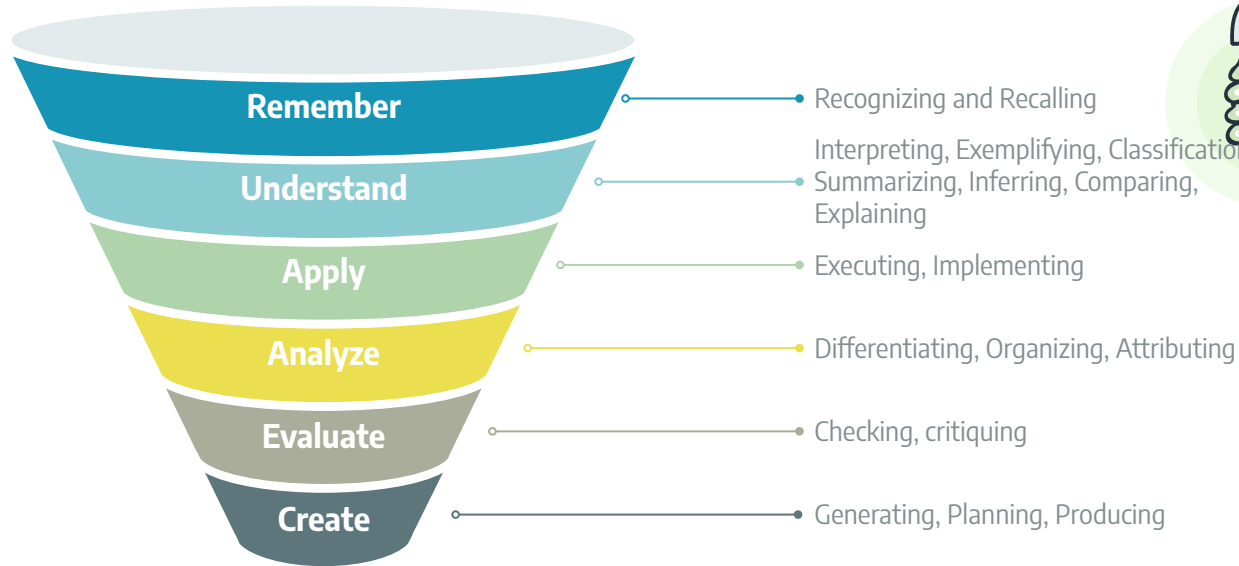
**Grades 6-8: GT Seminar, Monthly GT meetings, and Pre-Advanced Placement Coursework. Teachers at the middle school level are certified to offer these options.**

**Grades 9-12: Upper level courses according to interest and ability- Pre-Advanced Placement (Pre-AP) 2022-23 9th Grade Algebra I and English I, Advanced Placement (AP), seminars, monthly GT meetings, and concurrent credit. All teachers are trained to provide the program options for which they teach.**

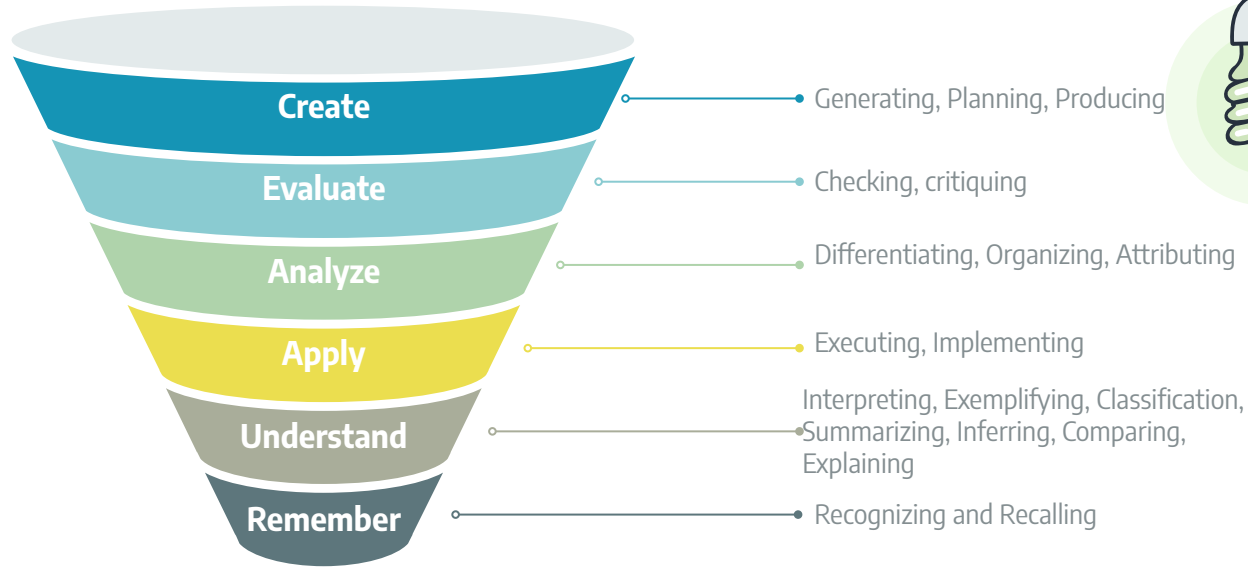
Curriculum should be differentiated in the areas of content, process, and/or product. Differentiation may be in level of complexity, pace of learning, or degree of abstractness. Another means of differentiating may be by studying topics not ordinarily taught as a part of the regular curriculum. Process skills for GT students should include: critical thinking, creative thinking, independent learning skills, research skills, problem-solving, and logic. Development of a scope and sequence ensures continuity of curriculum objectives.



# \* SKILLS IN TRADITIONAL CLASSROOM



# \* SKILLS FOCUS IN GIFTED CLASSROOM



# \* K-2 ENRICHMENT

ALL STUDENTS RECEIVE SUPPORT THROUGH ENRICHMENT LESSONS PROVIDED WEEKLY TO EXTEND CREATIVITY, PROBLEM SOLVING, AND CRITICAL THINKING SKILLS.

- EXTENSION LESSONS
- CREATIVITY LESSONS
- STEM LESSONS
- CRITICAL THINKING LESSONS

## Logic Puzzle

Costume Time! It's Halloween night. Four friends went trick-or-treating. They each wore a different costume. Can you tell what costume each child had on?

When Jackson knocks on doors he says, "Trick-or-treat, matey."

None of the boys dressed up as a firefighter.

Noah's costume had a cape.

|             | ABIGAIL | ERIK | JACKSON | NOAH |
|-------------|---------|------|---------|------|
| Firefighter |         |      |         |      |
| Pirate      |         |      |         |      |
| Scarecrow   |         |      |         |      |
| Superhero   |         |      |         |      |

Abigail dressed as a \_\_\_\_\_

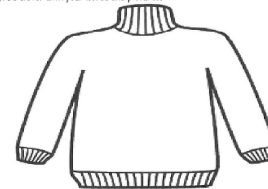
Erik dressed as a \_\_\_\_\_

Jackson dressed as a \_\_\_\_\_

Noah dressed as a \_\_\_\_\_

## Ugly Sweater

Design an Ugly Sweater that you are going to wear to a party. What party are you wearing it to? Add lots of color and details to your design. At the bottom of this page give at least two reasons why YOUR ugly sweater will be the talk of the party! Be clever with your words and pictures.



Most people want to wear a pretty s \_\_\_\_\_, but \_\_\_\_\_

---

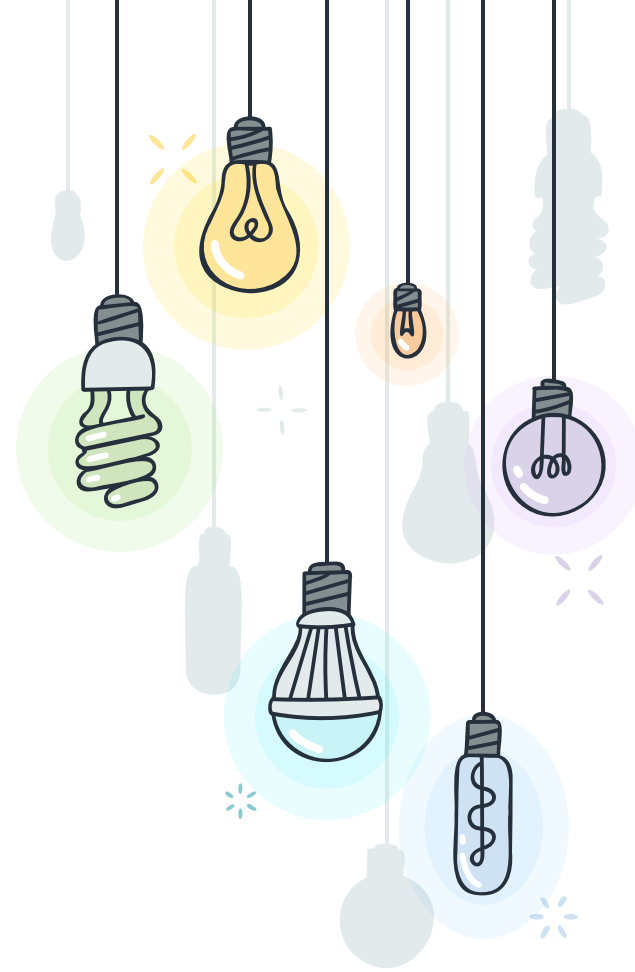
---

---

---

## \* RESOURCE/PULL-OUT- GRADES 3-5

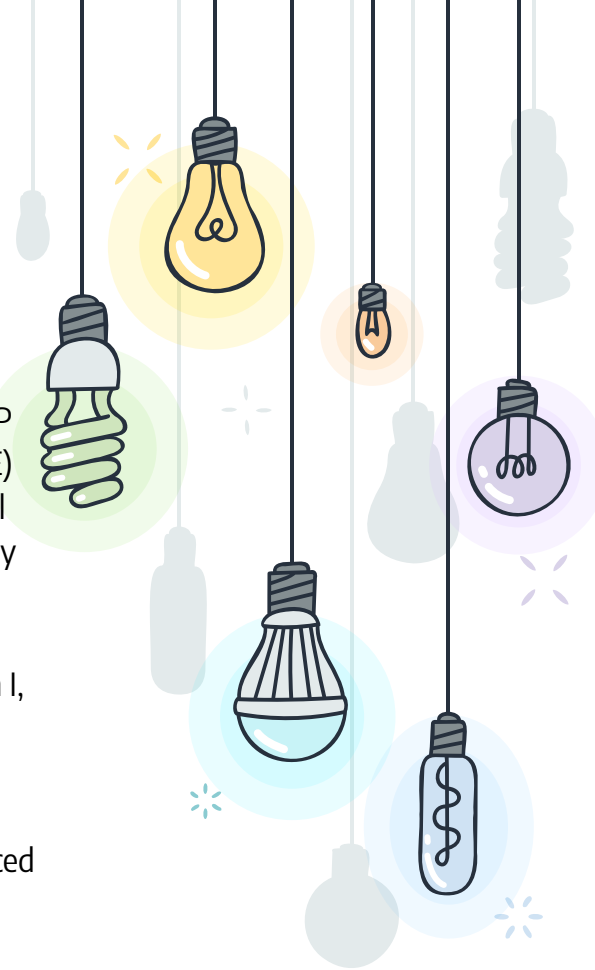
- PROJECT BASED LEARNING ENVIRONMENT
- INNOVATIVE THINKING
- RESEARCH
- PRODUCERS OF KNOWLEDGE VS. CONSUMERS
- PRESENTATION/COMMUNICATION SKILLS
- PROBLEM SOLVING/CRITICAL THINKING
- ATTENTION TO AFFECTIVE NEEDS
- GOAL SETTING, PLANNING
- REFLECTION
- PERSONALIZED LEARNING



# \* NEW ADVANCED COURSES FOR GRADES 6-10

Beginning with the 2022-23 school year, all 10th-12th grade courses formerly designated as Pre-Advanced Placement (PAP) within the Little Rock School District will be called Advanced. PAP Algebra I and PAP English I for 9th grade will be offered through a new state funded PAP Program recently released by the Department of Elementary and Secondary Education (DESE) in conjunction with the College Board. Teachers of the new PAP courses will complete special training provided by the College Board and will utilize curriculum and assessments provided by the College Board.

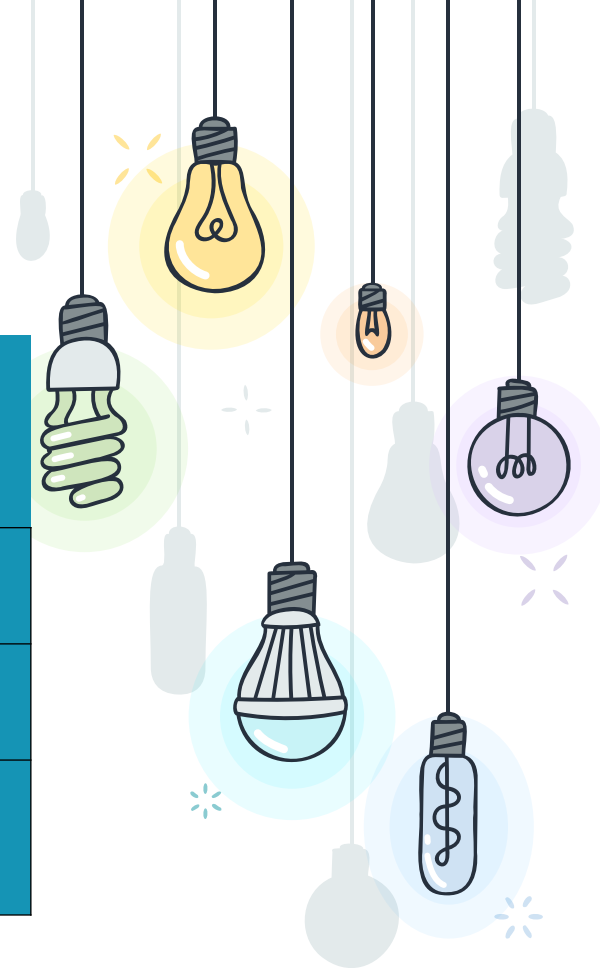
All courses formerly designated as PAP, with the exception of PAP Algebra I and PAP English I, will now be designated as Advanced. Advanced courses will provide the same instructional foundation skills as previously taught in PAP courses. Teachers of Advanced courses will also be required to attend specialized training to support students as they prepare to enroll in the Advanced Placement Program at the high school level. Courses designated as PAP or Advanced are intended to prepare students for Advanced Placement courses.



# PRE-AP TO AP PREPARATION

✱ If you currently are enrolled on one of these PAP courses, consider your next options.

| Pre-AP Course                                      | AP Course  |
|--|--|
| Pre-AP English 1 and 2                             | AP English Language and Composition<br>AP English Literature and Composition<br>AP Seminar |
| Pre-AP Algebra 1                                   | AP Computer Science Principles<br>AP Calculus AB<br>AP Statistics                          |
| Pre-AP Algebra 2 (available academic year 2022-23) | AP Calculus AB<br>AP Statistics<br>AP Physics 1<br>AP Physics 2                            |





GT Seminar is based on four core areas considered fundamental to the development of a differentiated curriculum. These include critical thinking, creative thinking, independent and group investigations, and personal growth. Emphasis is centered on students interests along with career and college readiness. GT Seminar is a course that was developed by the Arkansas Department of Education.



## Helpful Links: Follow us on Social Media:



**LRSD Gifted  
Programs**



**LRSD Gifted  
Programs@giftedlrsl**

## CONTACT US

**Romona Cheneval, Director K-12  
Jennifer Thomas, Secondary  
Specialist**

**Neva Johnson- Administrative  
Assistant/Bookkeeper**

**Office Phone: (501) 447-3390  
Office Fax: (501) 447-3391  
E-mails:  
romona.cheneval@lrsl.org,  
jennifer.thomas@lrsl.org;  
neva.johnson@lrsl.org**

## GT SEMINAR ELECTIVE

LITTLE ROCK SCHOOL  
DISTRICT GIFTED  
PROGRAMS



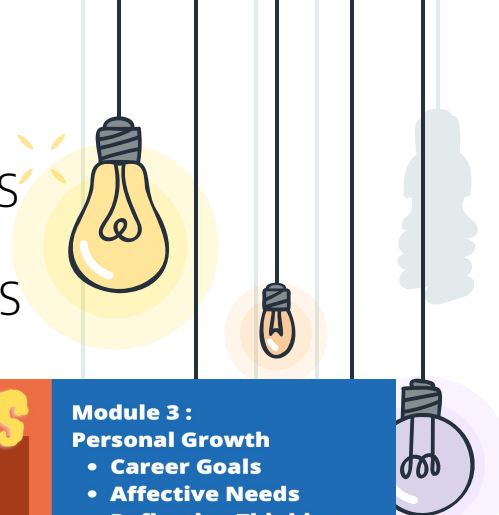
## POPULAR PROJECTS FROM THE PAST



- 1** Winter Bazaar  
Entrepreneurship
- 2** Escape Room  
Creations
- 3** CSI  
Forensics
- 4** Countries Around  
the World
- 5** Community  
Service Projects
- 6** Shakespeare  
Dramas
- 7** Stock Market  
Game

## GRADES 6-8

- ADVANCED COURSES
- GT SEMINAR
- MONTHLY MEETINGS



## MODULES

### Module 1 :

- **Innovative Projects**
- **Scientific Inquiry**
- **Engineering Design Process**
- **Stock Market Game**
- **Entrepreneurship**



### Module 2 :

- **Historical Timelines**
- **Debate**
- **Literary Studies**
- **Research**

**CREATIVITY IS  
INTELLIGENCE  
HAVING FUN!**

QUOTE BY:  
ALBERT EINSTEIN

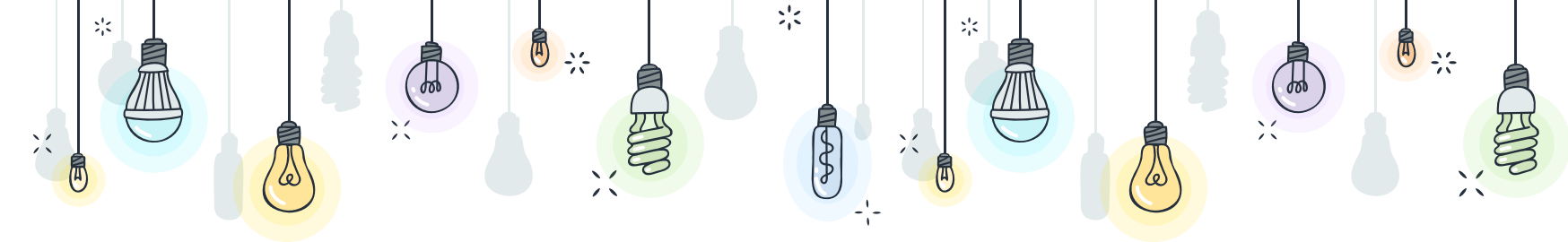
### Module 3 : Personal Growth

- **Career Goals**
- **Affective Needs**
- **Reflective Thinking**
- **College and Career Readiness**

### Module 4 :

- **Service Learning Projects**
- **Partnership Collaboration**
- **Problem-based Learning**





# ADVANCED PLACEMENT PROGRAM

## **Benefits of AP Enrollment:**

- AP Students are better prepared for the rigor of college courses.
- AP Students normally earn higher GPA's in college.
- AP Students save time- are more likely to complete a degree program within 4-5 years of high school graduation. Many complete program in shorter time spans.
- AP Students save tuition money by earning credit for courses prior to graduation.



# AP CREDIT POLICY for ARKANSAS

Arkansas Universities accept qualifying AP exam scores (scores of 3 or higher) for college credit per the new statewide AP Credit Policy adopted in 2018. This policy went into effect in the fall of 2018 for all freshmen entering college. To access the new AP Credit Policy for Arkansas visit

<https://www.adhe.edu/institutions/academic-affairs/advanced-placement/>

The image shows a screenshot of the Arkansas Department of Higher Education (ADHE) website. The browser address bar displays [adhe.edu/institutions/academic-affairs/advanced-placement/](https://www.adhe.edu/institutions/academic-affairs/advanced-placement/). The website header includes the ADHE logo and navigation links for Students & Parents, Institutions, Data & Publications, and About ADHE. A search bar is located in the top right. The main content area is titled "Advanced Placement (AP) Policy" and includes a section for "Effective Fall 2018". The text states: "The Arkansas Department of Higher Education Coordinating Board has established a set of guidelines by which institutions must award course credit for advanced placement exams. This policy should be implemented by institutions for entering freshman in the Fall 2018 semester." Below this, a section titled "Course Credit" explains that institutions should award credit to students scoring 3 or higher on any AP exam, and that credit should be reflected on the transcript, potentially reducing required hours. A sidebar on the left lists various academic affairs topics. Overlaid on the bottom right of the screenshot is a large black rectangle containing a QR code and the text "SCAN ME" in white capital letters.

# Advanced Placement Program (AP)

## College Board Programs

SAT

Advanced Placement Program

PSAT/NMSQT

The [Advanced Placement® Program \(AP\)™](#) offers students the opportunity to take college-level courses and exams in high school and earn [college credit](#), [advanced placement](#), or both at many colleges and universities in the U.S. and around the world.

By earning college credit in high school and skipping introductory courses in college, your child can save time and money as they work toward a college degree.

## Related Topics

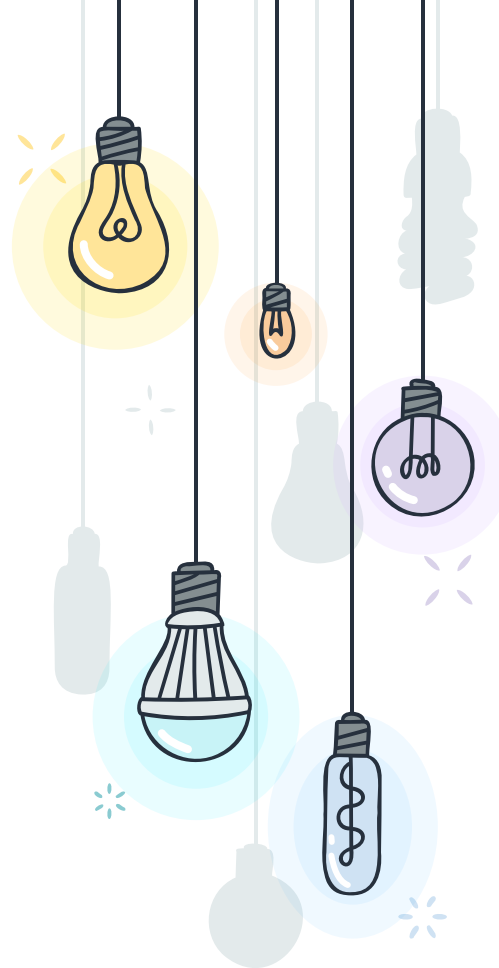
- [Webinar: New AP Resources and Processes for Your Students](#)

## My AP Classroom and AP Daily Videos:

<https://apcentral.collegeboard.org/learning-development/ap-classroom>

Big Futures: <https://bigfuture.collegeboard.org>

Parents: <https://parents.collegeboard.org/webinars>





## NEW- District Wide Concurrent Credit

Resolution passed to offer concurrent credit courses district-wide for the 22-23 school year.



2022-23 District-Wide Concurrent Enrollment Courses\*

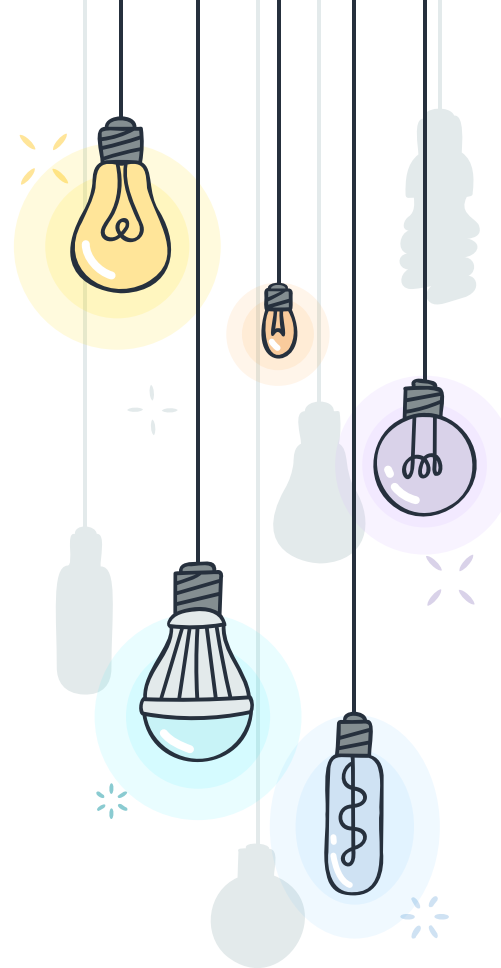
|                        |  |
|------------------------|--|
| Composition I          | Composition II                               |
| US History I (to 1877) | US History II (from 1877)                    |
| College Algebra        | Trigonometry                                 |
| Biology                | Quantitative Literacy/Mathematical Reasoning |

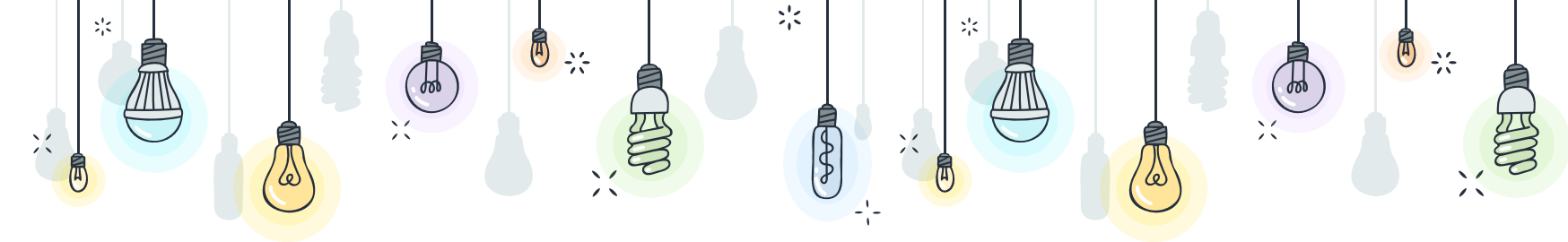
\*Additional courses may be offered by each campus as instructors are approved

### Instructional Delivery Methods

|              |   |
|--------------|---|
| In Person    | In-Person classes will be provided where approved LRSD instructors are available.   |
| Virtual      | Virtual delivery may be provided for campuses that do not have an approved LRSD instructor on-site.   |
| Asynchronous | Online courses provided by university or college with scheduled class period to complete coursework.  |
| AP Blended   | Dual credit course taught by an approved AP Teacher; student will earn ACTS (Arkansas Course Transfer System) credit through partnering university and will also have opportunity to gain credit through a qualifying AP Exam score of 3 or higher (subject to AP Course Credit Policy for qualifying course requirements, including but not limited to:) |

Interested in enrolling in Concurrent Credit courses for 2022-23?





# ADDITIONAL PROGRAM OPPORTUNITIES

- GT Summer SPARK Academy
- Destination Imagination
- VEX Robotics
- Chess
- Governor's School
- Quiz Bowl
- History Day
- Arkansas School for Math, Science and the Arts (ASMSA)
- Y.E.S. - Youth Entrepreneurship Showcase
- Others as they occur

# IDENTIFICATION PROCESS

- Step 1- Referral/Universal Screening
- \*\*Anyone Can Refer a Student\*\***
- Step 2- Additional Data Collection
  - Step 3- School Placement Committee Review
  - Step 4- District Standards Review Committee Review



# IDENTIFICATION PROCESS

Once both the school and district committees review individual student placements, a letter ✨ will be sent to share the determination.

Data reviewed for each student:

Achievement Data

Non-verbal Reasoning Exam

Creativity Assessment

Gifted Academic Achievement Exam Results

Observation Scales

Qualitative data from enrichment lessons

Grades





# ADDITIONAL RESOURCES:

Advanced Academics District  
Office (501-447-3390):

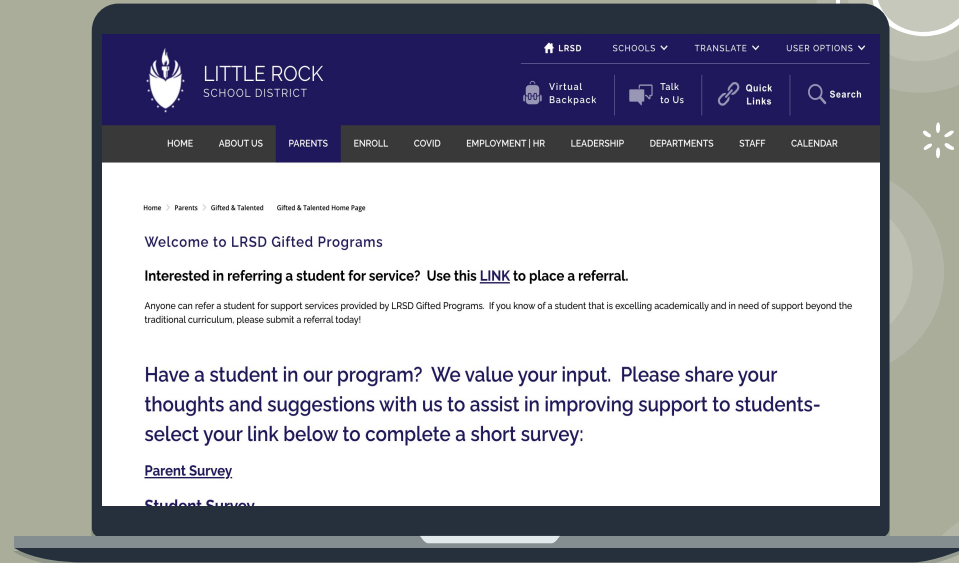
Romona Cheneval- Director  
[romona.cheneval@lrzd.org](mailto:romona.cheneval@lrzd.org)

Jennifer Thomas- Secondary  
Coordinator

[jennifer.thomas@lrzd.org](mailto:jennifer.thomas@lrzd.org)

Neva Johnson- Admin.  
Assistant

[neva.johnson@lrzd.org](mailto:neva.johnson@lrzd.org)



Like us on Facebook- LRSD Gifted Programs  
Follow us on Twitter-  
[@LRSDGiftedPrograms](https://twitter.com/LRSDGiftedPrograms)

# THANK YOU!

Let us know how we did tonight-

REFER a student  
HERE:



SCAN ME



SCAN ME

